



SURF LIFE SAVING
NEW SOUTH WALES



Clovelly Surf Life Saving Club

Patrol Operations Manual

Season 24/25

PATROL OPERATIONS MANUAL

INTRODUCTION

Clovelly Surf Life Saving Club Patrol Operations Manual (**POM**) is based on a template developed by SLSNSW and revised 2021 by SLSS and populated with relevant local information for general reference. This document provides Patrol Captains and Patrol Vice Captains with a clear understanding of the requirements of managing patrols at Clovelly Beach

It is also provided as an external reference document to local Branch officials and SurfCom operators as it contains important local information and key club contacts.

Local hazards/risks and patrol methods relevant to Clovelly Beach, and the surrounding District, are also contained in the POM. These outline the accepted manner of responding to and managing local situations and are important to know.

TABLE OF CONTENTS

Introduction	2
Table of Contents.....	3
Communication.....	5
Club and Club Officer Details	5
Club Callout Teams.....	6
Emergency and Support Services	6
Club Radio Procedures	7
Signing on with SurfCom.....	7
Change Over.....	7
Extension of Patrol Hours	7
Patrol Sign Off.....	7
Radio Channels	8
Hazard / Risk Management.....	9
Hazard / Risk Map- style option 1	9
Patrol area map and hazard locations - style option 2	Error! Bookmark not defined.
Hazard / Risk Management Plan	11
Beach Management.....	12
Minimum Patrol Requirements	12
Patrol Types	13
Base Patrol	13
Foul Weather Patrol	13
Beach Closed Patrol.....	13
Surveillance Patrol.....	13
Sub Patrol Types	13
Satellite Patrol.....	13
Outpost Patrol.....	13
Roving Patrol.....	13
Beach Management Roles	14
Daily Patrol Procedures.....	15
Pre-Patrol Procedure.....	15
Nippers / Water Safety.....	15
Club Rules.....	16
Local Government Rules	17
Emergency Operations Plans	18
Emergency Beach Closure.....	18

Shark Sighting Procedure.....	18
Closure Periods.....	18
Tsunami Plan.....	18
Coastal Flooding Plan	19
Bushfire Emergency Plan (RNP).....	19
Emergency Rally Point.....	21
Helicopter Landing Zone.....	22
Standard Operating Procedures	23

COMMUNICATION

CLUB AND CLUB OFFICER DETAILS

Name of Surf Life Saving Club	Clovelly Surf Life Saving Club
Club Phone Number	(02) 9665 1441
Club Address	Bundock Park, Donnellan Cct, Clovelly, NSW, 2031
Club additional location details	PO Box 2094 Clovelly NSW 2031
Club website	https://www.clovellysurfclub.com.au/contact.html
Clubhouse GPS co-ordinates	-33.91609607586914, 151.27693124773322

Club Position	Name	Email
President	Susie Peterson	president@clovellysurfclub.com.au
Vice President	Matt Scott	vp@clovellysurfclub.com.au
Vice President	Mark McGuire	
Club Captain	Kim Davey	lifesaving@clovellysurfclub.com.au
Club Vice Captain	Dom Winkle	
Secretary	Mark Hetherington	secretary@clovellysurfclub.com.au
Nippers President	Blake Briggs	junioractivities@clovellysurfclub.com.au
Treasurer	Nicole Solly	finance@clovellysurfclub.com.au
Registra	Rebecca Cocks	registra@clovellysurfclub.com.au
Chief Training Officer	Cheree D'Ornay	education@clovellysurfclub.com.au
IRB Captain	Tom Hetherington	
Chief Gear Steward	Fiona Clissold	
Radio Officer	Roslyn Manual	memberservices@clovellysurfclub.com.au
First Aid Officer	Roslyn Manual	memberservices@clovellysurfclub.com.au
Surf Sports Competition	Kimmy Rashleigh	surfsports@clovellysurfclub.com.au
Junior Co-Captain		

Patrol	Name
Patrol Captain 1	Tom Barker/ Tom Small
Patrol Captain 2	Martin LaNauze
Patrol Captain 3	Shelby Johnson/ Justin Sayer
Patrol Captain 4	Timothy Carey
Patrol Captain 5	James Collins
Patrol Captain 6	Roslyn Manuel
Patrol Captain 7	Mark Sawicki
Patrol Captain 8	Andrew Lincoln
Patrol Captain 9	Cheree D'Ornay
Patrol Captain 10	Athenia Pascoe
Patrol Captain 11	Leanne Porter
Patrol Captain 12	Bianca Manuel
Patrol Captain 13	Simon McLevie/ Jonathan Kane

CLUB CALLOUT TEAMS

Each Club should have an *Emergency Callout Team* that can respond to incidents within the *Emergency Response Area* as outlined in the Lifesaving Service Agreement.

The following members have been nominated to the Club call-out team.

Name	IRB Driver / Crew/ ART	Club Access
Tom Hetherington	IRB Driver/Crew/ART	Club House, Boat Shed, First Aid room
Dom Winkle	IRB Driver/Crew/ ART	
Tom Barker	IRB Driver/Crew/ ART	
Justin Sayer	IRB Driver/Crew/ART	
Shelby Johnston	IRB Driver/Crew/ ART	
Kimmy Rashleigh	Crew /ART	
Bryce Wilde	Crew	
Kim Davey	ART	
Cheree D'Ornay	ART	
James Collins	ART	

Refer to the SLNSW Call out Standard Operating Procedure LS10.9 for further details and instructions – located at the end of this manual. Refer to the table of contents.

The following equipment should always be available and ready for use in the Gear Shed and / or Patrol Room for access by the call-out team.

- Radios and radio bags
- Rescue boards
- Rescue tubes and fins
- IRB – on trailer with a full fuel cell
- IRB – spare fuel / spare fuel cells
- PFDs
- Oxygen Resuscitator
- AED
- First Aid Kit
- Spinal Board and straps
- ATV / SSV (if applicable)

EMERGENCY AND SUPPORT SERVICES

Service	Radio	Phone	Other
Clovelly Surf Club	Channel 2	02 9665 1441	
Coogee Surf Club	Channel 2	02 9665 5138	Response time - 5 minutes
Bronte Surf Club	Channel 2	09 9389 6500	Response time - 5 minutes
SurfCom	Channel 3	8471 8092	
SLSS Support Ski	Channel 3		
SLSS Offshore Rescue – Surf Rescue 30	Channel 3	0408 330 246	
SLSS Rescue Coordinator	Channel 3	0490 087 801	
SLSS Eastern Suburbs Duty Officer	Channel 3	0436 190 051	
SLSS Sutherland / RNP Duty Officer	Channel 3	0429 443 793	
Lifesaver 21	Channel 1	9694 3100 (base)	
Council Beach Manager			
Local Council Lifeguards			
Emergency Services	Channel 3 (via SurfCom)	000	
Local Hospital ED	Prince of Wales, Randwick		

CLUB RADIO PROCEDURES

SIGNING ON WITH SURFCOM

1. Priority must first be given to signing on with SurfCom using the Patrol operations app
2. If successful in signing on to Patrol with the Patrol Operations App, then SurfCom will commence a radio check with each Club, normally from North to South (this will change pending variations in Club start times).
3. If Clubs cannot sign on to Patrol using the Patrol Operations app, they then may sign on via the radio network (Channel 3) with SurfCom directly, with SurfCom to contact each Club.
4. SurfCom will request the following
 - a. Beach Status (closed – reason for beach closure)
 - b. IRB Status (Operational / Non-operational)
 - c. Number of Bronze members
5. All morning Patrols using the Patrol Operations app must ensure that they sign off at the conclusion of their Patrol.

CHANGE OVER

1. First, communicate with the morning Patrol Captain, or Patrol Operations App coordinator and establish if the morning patrol successfully signed off using the Patrol Operations app (if they used it).
 - a. Afternoon Patrol will then be able to sign using the Patrol Operations App, repeating steps 1 & 2 above. If the Patrol member operating the app has problems, the opportunity for a 'manual' sign on through SurfCom via the radio is still available.
2. If the morning Patrol signed on 'manually' with SurfCom, and the afternoon Patrol would like to use the Patrol Operations App, the afternoon Patrol must then radio SurfCom and request the Patrol to be signed off so that the afternoon Patrol can sign on using the app.
3. For afternoon Patrols that cannot sign on with the Patrol operations app, must then complete a manual sign on with SurfCom, repeating:
 - a. Beach Status (closed – reason for beach closure)
 - b. IRB Status (Operational / Non-operational)
4. Number of Bronze members

EXTENSION OF PATROL HOURS

Patrol Captains are to make an informed risk assessment based of Beach patronage levels and weather conditions, in consultation with Lifeguards (where applicable) as to whether an extension of the Patrol hours will take place. If decided in favour of extending the Patrol sign off, the Patrol Captain is to radio SurfCom and advise of how the approximate time at which the new sign off will take place.

PATROL SIGN OFF

1. Sign off using the Patrol Operations app. If this doesn't work you can still request a sign off manually via radio with SurfCom.

2. If you don't use the Patrol Operations app, sign off manually with SurfCom via radio, reporting the number of rescues

RADIO CHANNELS

Channel 1 – Emergency working channel (line of sight only). Used during major incidents where Duty Officers, RWCs, Helicopters are involved. Note: If there is a major incident, SurfCom or a Duty Officer may ask you to switch to channel 1, from channel 3 if you are responding to that incident.

Channel 2 – Patrol Channel (line of sight only). Used for everyday internal patrol communications (IRB, roving patrols, SSV). Note: RNP Clubs may encounter difficulties whilst using this Channel and may be required if absolutely essential to utilise Channel 3 where required.

Channel 3 – Primary repeater channel. Used for all communications with SurfCom and other SLS assets / Clubs.

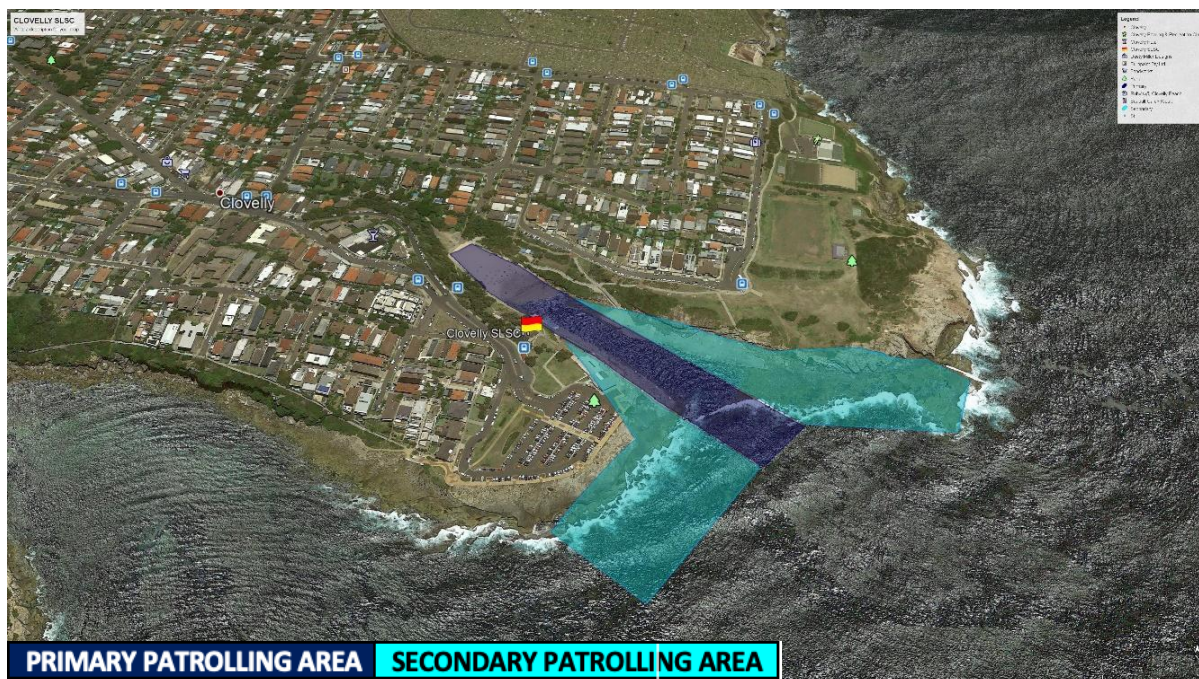
Channel 4 – Scan channel, scans both channel 3 and 2 at the same time. Note: If you transmit on channel 4, it will be broadcasted on channel 2 only. Suitable channel for Patrol Captains to use to listen to both channels.

Channel 58, 66, 67, 68 – Training channels. Can be used for 'chit chat', training or other non-emergency / operational Patrol requirements.

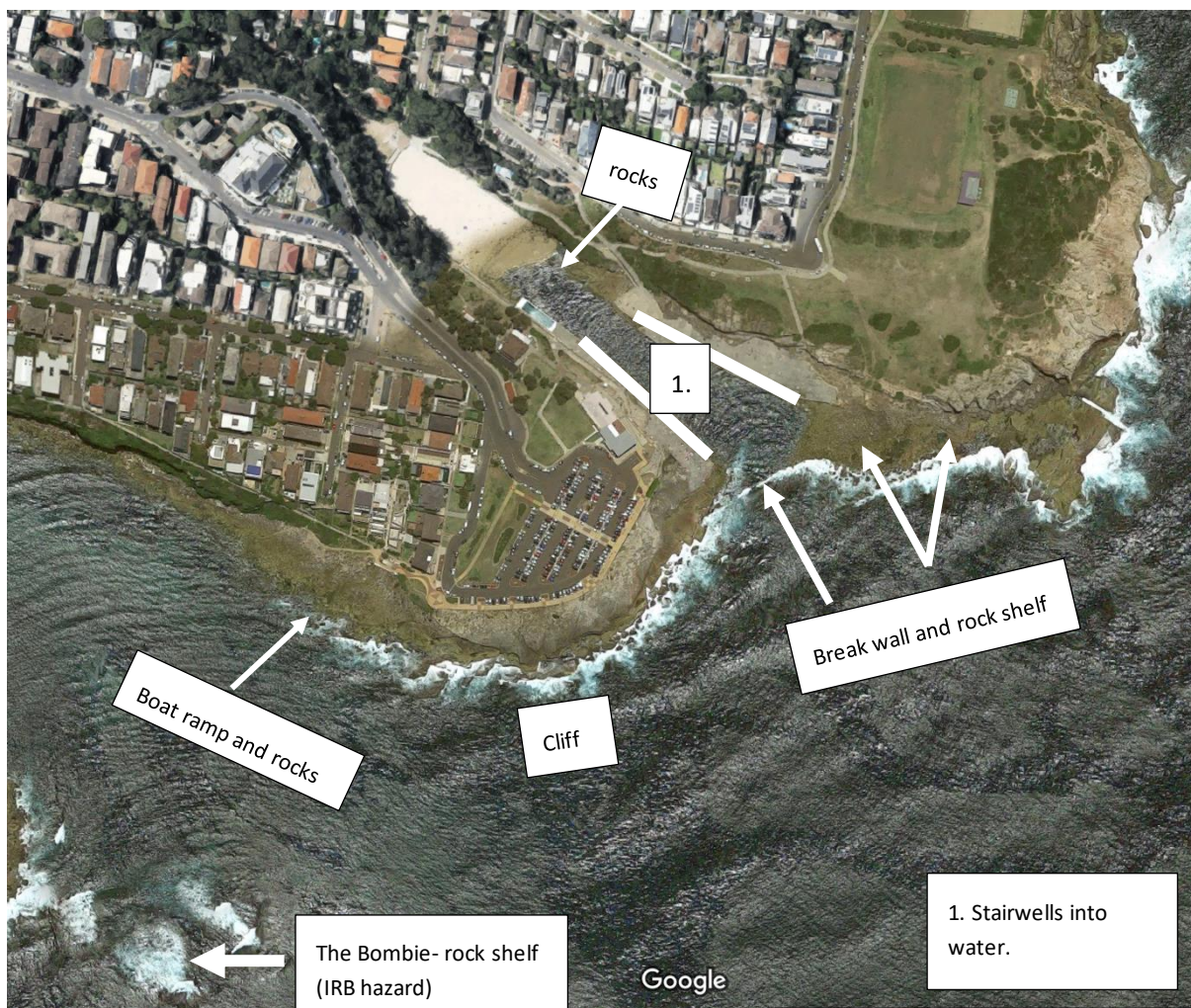
Notes:

- All radios should include manual repeater-based channels, e.g. 'CLOVELLY'. You should use these channels to improve radio communications if for whatever reason your radio automatically selects a repeater that is out of area. (i.e. You are located at the north promenade on Channel 3 and it is scanning showing 'Coogee', you can then switch to Channels 5, 6, 7 etc which display the individual repeaters.

PATROL AREA MAP AND HAZARD LOCATIONS



PATROL HAZARD / RISK MAP



HAZARD / RISK MANAGEMENT PLAN

Hazard	Risk	Management Plan
Navigating the stairwell in and out of the water	People unable to get in and out of the water leading to injury	Lifesavers at stairs to help people in and out of the water. Rescue tubes attached to all stairwells. Maintain surveillance at the stairwells.
Low Tide Dangers	Spinal injuries/ dislocations	Equipment: Backboard in first aid room Sling in first aid room (dislocations) Response: Notify SurfCom for ambulance support. f a spinal, remove patient from water- if tide too high, float patient down to beach and enact spinal management plan. Regular drill spinal scenarios, drills to help people up the stairs. I
Rip currents and holes	Persons caught in rips/ unable to swim- <i>particularly at unpatrolled parts of the beach</i>	<ul style="list-style-type: none"> Identify rips Lifesaver at water's edge whenever people swimming Constant surveillance of designated patrol areas Consistent surveillance of adjacent areas with binoculars Regular roving patrols (Nth Clovelly and Gordon's Bay) Preventative actions as required
Snorkelers and Scuba divers	<ul style="list-style-type: none"> - Snorkelers colliding in water as not looking where going. - Snorkelers not being able to get out of the water as they are unfamiliar with the terrain (Gordons Bay) - Snorkelers or scuba divers stranded offshore 	<ul style="list-style-type: none"> Maintain surveillance of offshore waters Maintain surveillance of adjacent surf zone Launch IRB and/or request RWC assistance to warn divers to stay clear of rocks. <p><u>If rescue of divers required:</u></p> <ul style="list-style-type: none"> Notify SurfCom Launch IRB Approach from shore Have diver discard any/all equipment upon approach Notify SurfCom when all-clear
Blue Bottles	Injury to public (minor) Anaphylactic reaction to sting (serious)	<ul style="list-style-type: none"> Erect warning signage if significant numbers of blue bottles seen in the surf zone Provide access to hot showers for any persons stung (for children ensure parents accompany them) Provide ice to persons leaving beach if stung Assess history of allergic reactions to bee stings etc Assess any patients significantly stung and/or stung around the chest, neck, face/head Monitor breathing and level of consciousness Request ambulance support from SurfCom for any breathing difficulties / lowered level of consciousness, treat as required
Dangerous surf	Injury to swimmer, drowning,	<ul style="list-style-type: none"> Provide warning via loud-speaker to move away from dangerous area- Evacuate area if necessary. Notify SurfCom <p>Equipment: rescue tubes at all stairwells, rescue boards on the south promenade, outpost on the north promenade</p>
Sharks	Public Panic Injury to swimmers (low risk)	<ul style="list-style-type: none"> If lifesaver/lifeguard reported shark sighting – evacuate water, close swimming area, Notify SurfCom Launch IRB and patrol immediate area until confident shark has left the area, before reopening For 'public only' (unconfirmed) reported shark sighting, launch IRB and patrol area, as well as upscale water surveillance via binoculars

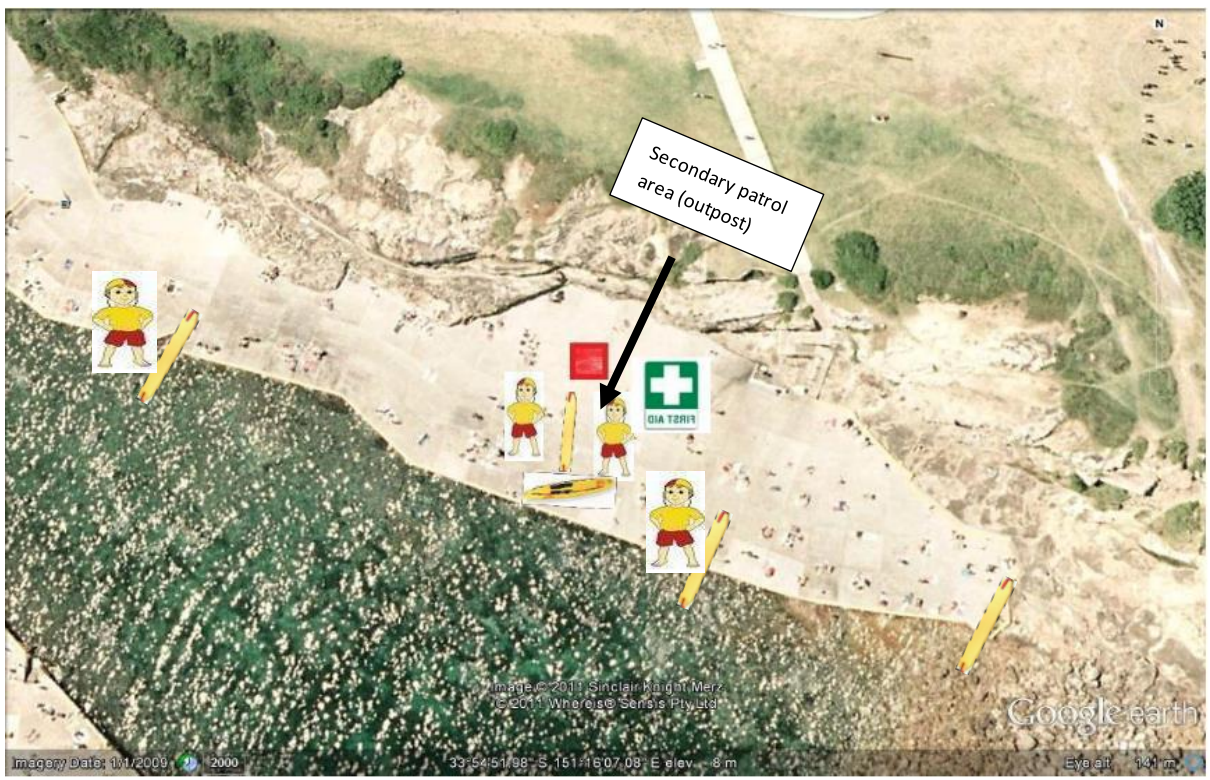
BEACH MANAGEMENT

MINIMUM PATROL REQUIREMENTS

South Promenade



Outpost- North Promenade



PATROL TYPES

BASE PATROL

A Base Patrol is the core patrolled area for a lifesaving service established at all times and dates as identified in the Lifesaving Service Agreement. A Base Patrol must meet all minimums for personnel and equipment as stated in Standard Operating Procedure LS3.1. A Base Patrol may be supported by multiple Sub Patrols to effectively manage the beach operations as identified in the Patrol Operations Manual.

FOUL WEATHER PATROL

A Foul Weather Patrol is a downgraded Base Patrol, operated when services are exposed to inclement weather conditions, irrespective of the surf conditions. Minimum personnel and equipment are as per Base Patrol (refer LS 3.3.2).

BEACH CLOSED PATROL

A Beach Closed Patrol is a Base Patrol with a closed swimming area. The swimming area may be closed for situations such as dangerous conditions or an emergency. Minimum personnel as per Base Patrol. Minimum equipment as per Base Patrol with patrol and surf craft boundary flags removed (refer LS3.3.3).

SURVEILLANCE/ PATROL

A Surveillance Patrol is executed when minimum personnel requirements cannot be met for any reason. In this situation available members are required to stay at the beach for the duration of the rostered hours and monitor swimmers. Flags are not erected. SurfCom and the Duty Officer must be informed immediately, and additional personnel sought wherever possible to return the beach to Open status.

SUB PATROL TYPES

SATELLITE PATROL

A Satellite Patrol is a sub patrol type with patrol flags and operates as extension of the Base Patrol as defined within the services Patrol Operations Manual to provide surveillance at an area of high risk. A Satellite Patrol may operate almost independently of a Base Patrol to similar minimum requirements (refer LS3.3C).

OUTPOST PATROL

An Outpost Patrol is established at other areas of coastline. This sub patrol type no patrol flags and operates as an extension of the Base Patrol, as defined within the service's Pat Operation Manual to provide surveillance at an area of high risk (refer LS 3.3B).

ROVING PATROL

A transient patrol method whereby a mobile lifesaving unit sourced from the Base Patrol, travels along the coastline (via land or water), surveying adjacent areas of water/beach as per service's Patrol Operations Manual (refer LS3.3A).

Note: Clovelly is a flagless beach

BEACH MANAGEMENT ROLES

Type	Radio Ch	Call Sign	Patrol Method / Details
Patrol Tent (Command Post, south promenade)	Ch 2 & 3	"Clovelly Patrol"	Patrol Command Post Patrol Captain Location Key Equipment Location Elevated Scanning / surveillance position Lifesavers watching the stairs 1 lifesaver scanning unpatrolled areas with binoculars
Clovelly beach	Ch 2	"Clovelly Beach"	Lifesaver at beach when conditions warrant outpost Standing or sitting - constant surveillance with tube, radio bum bag and whistle rotating out every 20-30 mins
Outpost	Ch 2	"Clovelly North Promenade "	Lifesavers positioned at the north promenade with the outpost trailer. (outpost trailer includes first aid, oxy viva, rescue board) Minimum of 2 lifesavers (as practical) Radio, Tube, Bum Bag & Whistle
Roving Patrol	Ch 2	"Clovelly Gordons"	Minimum of 2 Lifesavers (where practical) Radio, Bum bag, Tube and Whistle
IRB Patrol	Ch 2/3	"Clovelly IRB"	Roving IRB patrols as required. 2 full patrols per patrol Qualified Driver & Crew (with radio) Patrol Life Jackets and wetsuits to be worn
In-water Patrol	n/a	n/a	Swimmers wearing patrol cap with rescue tube Paddlers on Rescue Board + patrol cap
Offline / On-break Lifesavers	n/a	n/a	On Lunch rotation / break Must have advised PC and have clear return time Must remove patrol uniform if leaving beach or undertaking non-SLS activities
Branch & External Services			
SurfCom	Ch 3	SurfCom	Online during all patrol hours
Helicopters	Ch 1	Lifesaver 21 Polair: Polair 1 Ambulance: Rescue 22	If responding to an emergency where Helicopters are involved confirm with SurfCom on Ch3 that working channel is Ch1 (and then switch). If a Helicopter is circling off the beach switch to CH1 to check for any communication
SLS RWC	Ch 3	Support Ski (3)	Branch RWC's conduct roving patrols along the coast and can assist in an emergency
Rescue Coordinator (RCO)	Ch 3	Sydney 10	Branch RCO's are responsible for managing resources across major incidents. Duty Officers report to RCO's as needed
Duty Officer (DO)	Ch 3	Sydney 11-15	Branch Duty Officers provide roving support to patrols and can be requested via SurfCom
Offshore Rescue Boat	Ch 3	SR30	The Offshore Rescue Boat provides inter-beach support and offshore roving capabilities. Typically contact via SurfCom unless on Duty on the local beach vicinity

DAILY PATROL PROCEDURES

PRE-PATROL PROCEDURE

- All members to contact their patrol captain at least 48hrs prior to patrol to advise of any attendance issues
- Patrol Captains to contact all members (direct contact) at least 3 days prior to patrol to confirm attendance
- Minimum patrol requirements must be met (section 4.3). If issues are identified, PC's are to contact the Club Captain
- If issues are not resolved, the Club Captain shall notify the Branch Director of Lifesaving prior to the weekend.

Start of Patrol	End of Patrol
<ol style="list-style-type: none"> 1. All members arrive at least 15mins prior to start 2. Minimum standards assessed (numbers / quals) 3. Introductions with on-duty Council Lifeguard 4. Equipment should be checked and set up for patrol (including Oxygen stores and AED self-test) 5. Patrolled area location should be determined 6. Fuel stocks should be checked 7. Paperwork / Operations app checked / completed 8. A Patrol briefing should take place discussing: <ul style="list-style-type: none"> • roles / responsibilities • Scanning and surveillance • Carrying tubes / radios on the beach • Radios / Channels (callsigns) • Rotation roster • Uniform standards • Particular hazards / risks • Rules around leaving the Patrol • Use of the SSV • Equipment issues • Activities and training / scenarios for the day 	<ol style="list-style-type: none"> 1. Scanning / Surveillance maintained by at least 1 Lifesaving during 'pack-up'. 2. Rescue equipment still available during 'pack-up' 3. Paperwork/App updates fully completed 4. Sign-off and appropriate information provided to SurfCom 5. All equipment cleaned and appropriately stored 6. Radios placed on charge 7. Outboard 'flushed' 8. SSV hosed thoroughly 9. IRB and SSV stored 'Rescue Ready' for after-hours callouts 10. Any supply requirements or equipment damage / failures reported (same day) to the appropriate club officer 11. A 'Patrol Debrief' should be conducted with all Patrol members, discussing <ul style="list-style-type: none"> • Rescues / incidents • Any questions from members • Training options / desires • Upcoming events / opportunities • Next Patrol date

NIPPERS / WATER SAFETY

Nipper in-water activities (including education and surf sports training) are to adhere to the SLSA Water Safety Policy (**SLSA Policy 1.01**) at all times. Nipper in-water activities are to only be conducted in the immediate vicinity of the active patrolled area.

Nipper in-water activities cannot be undertaken on a closed beach.

The Patrol Captain has internal 'control' of all lifesaving activities on the beach including Nipper activities. The appointed Water Safety Coordinator has delegated 'command' of water safety requirements for Nipper activities.

For Nipper in-water activities:

- The Patrol Captain and Water Safety Coordinator should conduct a risk assessment in consultation with other local Lifeguard services, as required, and agree for Nipper activities to take place
- The Patrol Captain must maintain oversight of the activity
- The Water Safety Coordinator must supervise the activity to ensure compliance with the SLSA Water Safety Policy, maintain radio contact with the Patrol and report to the Patrol Captain as required
- The Water Safety Coordinator must ensure a fully provisioned Missing Persons Kit (the blue Search equipment box issued by SLSS) is positioned in the immediate vicinity of the activity and be accessible to the Patrol and water safety
- the Water Safety Coordinator must maintain sufficient water safety (minimum 1 water safety for every 5 participants). Water safety resources should be in addition to the patrol and must not detract from the minimum patrol requirements. If insufficient water safety is available, Patrol activities shall take precedence and the Nipper activities must be halted, until sufficient water safety is available.
- An IRB must be available for water safety. This may be the patrol IRB or a separately provisioned IRB. The IRB should be on the water, rather than stationary on the beach.

Patrol Captain's should be generally aware that only persons holding a current NSW Working With Children Check (typically Age Managers, Water Safety and delegated club officers) may be in control of or contact with Nippers and other members under 18 years of age during SLSA activities.

To build skills and maintain SAR coordination Clovelly Surf Club conducts a search and rescue drill each season prior to 31 December, supervised by an appointed Branch Officer.

Key References

- SLSA Policy 1.01
- SLSA Water Safety Procedure 1.01
- LS3.11 Nipper activities & patrols
- LS3.2 Lifesaving service requirements (minimum) - note SLSS minimum of 5 patrolling members

CLUB RULES

- Full Patrol uniform must always be worn
- At least one Patrol member is to be always watching the water
- At least one Patrol member should always be monitoring the radio, Channel 2 and 3.
- The Patrol Captain is to always be made aware of Patrol member location / activities.
- At least one Patrol member at the waters edge with a rescue tube and whistle (when there are swimmers in the water).
- Rescue tubes to be carried or immediately available to Patrol members when on the Beach
- Rescue tubes should not be tied to flag poles
- Members should not text, sunbathe or engage in any unprofessional behaviour (in uniform) in public view
- Only qualified IRB drivers and crew are to operate the IRB
- Only licenced drivers are to operate the SSV
- The SSV should always be left facing the water and is to always be operated at a low speed
- No passengers are allowed in the tray of the SSV
- The Gear Steward or Club Captain should be notified immediately of any equipment damage / issues
- Patrols are to adhere to full start and end of patrol procedures

- All paperwork or the operations app is to be completed for each Patrol

LOCAL GOVERNMENT RULES

- Clovelly Beach and surrounding reserves are smoke and alcohol-free zones
- Clovelly SLSC patrolling members can advise the public of this, but are not required to enforce the law
- If there are potential alcohol related issues on the beach, contact local Council Lifeguards and Police

EMERGENCY OPERATIONS PLANS

EMERGENCY BEACH CLOSURE

Patrol Captains should consider the 'closure' of a beach at any time that there is an unacceptable / unmanageable risk to the public of the lifesaving service is unable to safely perform water safety tasks. For a detailed procedure, refer to Standard Operating Procedure LS 9.1 Emergency Beach Closure.

Examples include:

- Dangerous Surf Conditions
- Sharks
- Excessive Stingers
- Chemical / fuel spill
- Powercraft hazards
- Lightning
- Tsunami / flood warning
- Storm pollution

SHARK SIGHTING PROCEDURE

1. Determine if water area is to be evacuated
2. Inform SurfCom that you are about to close the patrolled area
3. Activate the 'Emergency Evacuation Alarm'
4. Inform every one of the following
 - Water area is being closed; and
 - Reason for closure
5. Lower and remove the red and yellow Patrol flags and black / white surfcraft flags
6. Post 'Swimming not advised' signs at identified beach access points and where the flagged areas was located
7. Continually monitor all areas
8. Maintain minimum personnel, qualification, and equipment requirements
9. Maintain an active presence on the beach to advise / warn public
10. An appropriate record should be made in the patrol log giving an outline of the incident

CLOSURE PERIODS

Generally, the beach will remain closed until such time as identified hazard is controlled or no longer presents a risk,

Recommended closure periods include:

- Dangerous Surf Conditions – as determined / appropriate
- Shark – minimum 30 minutes from last confirmed sighting (or completion of search)
- Chemical / biological hazards – after communication from authorities that the area is safe

TSUNAMI PLAN

Surf Life Saving NSW is recognised under the State EMPLAN as a *support agency* in a Tsunami event broadly, our role includes:

- Close and evacuate beaches on receipt of a NSW Tsunami Warning or upon observation of unusual ocean behaviour indicative of a tsunami, in consultation with Local Government and / or SurfCom
- Assist with the rescue of people from the surf zone following the impact of a tsunami
- Notify the SES via SurfCom when unusual ocean behaviour indicative of a tsunami is observed or a tsunami has occurred for which there has been no prior warning.

For a detailed procedure, refer to Standard Operating Procedure LS 9.12 Tsunami Warning and the SLSNSW Tsunami Plan.

There are two types of tsunami threats:

1. Marine threat – may influence currents / rips / water energy and immediate foreshore
2. Land threat – may impact coastal area, inlets and inland inundation (rare event, but significant impact)

The SES is the *lead agency* for tsunami response and will advise Surf Life Saving of a tsunami warning through the State Duty Officer, who will co-ordinate the SLS response. Due to the location of *fault line*' (starting points of tsunami's a warning should precede the tsunami impact by a number of hours.

Essential patrol and rescue equipment, including an IRB on a trailer should be transported to higher ground in the event of a tsunami warning being issued.

COASTAL FLOODING PLAN

SLSNSW is recognised under the State EMPLAN as a *support agency* in a coastal flooding event. Broadly, our role includes:

- Assist the SES with the warning and / or evacuation of at risk communities
- Provide space in SLS facilities for evacuation centres where required
- Assist the SES with flood rescue operations

For a detailed procedure, refer to Standard Operating Procedure LS 9.11 Coastal Flooding. Each SLS Club has an obligation to be prepared and respond in line with a land threat tsunami warning.

Sydney Branch surf lifesaving clubs are not likely to be affected by either *flash flooding* or *storm surge* flooding. Storm surge flooding will generally coincide with high tides and is easier to predict and prepare for. Flash flooding is unpredictable and occurs in a short period of time, occasionally a storm warning may be issued prior to the flooding event.

In the event there is localised flooding, SES is the *combat agency*. Surf Life Saving as a support agency must only assist when requested by the SES with all SLS assets and members being tasked and direct by SLSNSW.

BUSHFIRE EMERGENCY PLAN (RNP)

SLSNSW is recognised under the State EMPLAN as a *support agency* in a Bushfire event. Broadly, our roles includes:

- Assist the RFS with the warning and / or evacuation of at-risk communities
- Provide space in SLS facilities for evacuation centres where required
- Assist the RFS by communicating information on numbers of persons and safety of the public

In the event of a bushfire, the RFS is the combat agency. National Parks and Wildlife Services is the land manager and SLS is a support agency which must only assist when request by the RFS.

Garie Beach – Has road access

Era / Burning Palms Beach – Patrol activities can be impacted by a number of different scenarios. The NSW RFS is responsible for the fire danger warnings and ratings. NPWS also have documented emergency management plans such as the Garrawarra Farm EMP and the Garie precinct EMP. These plans include the

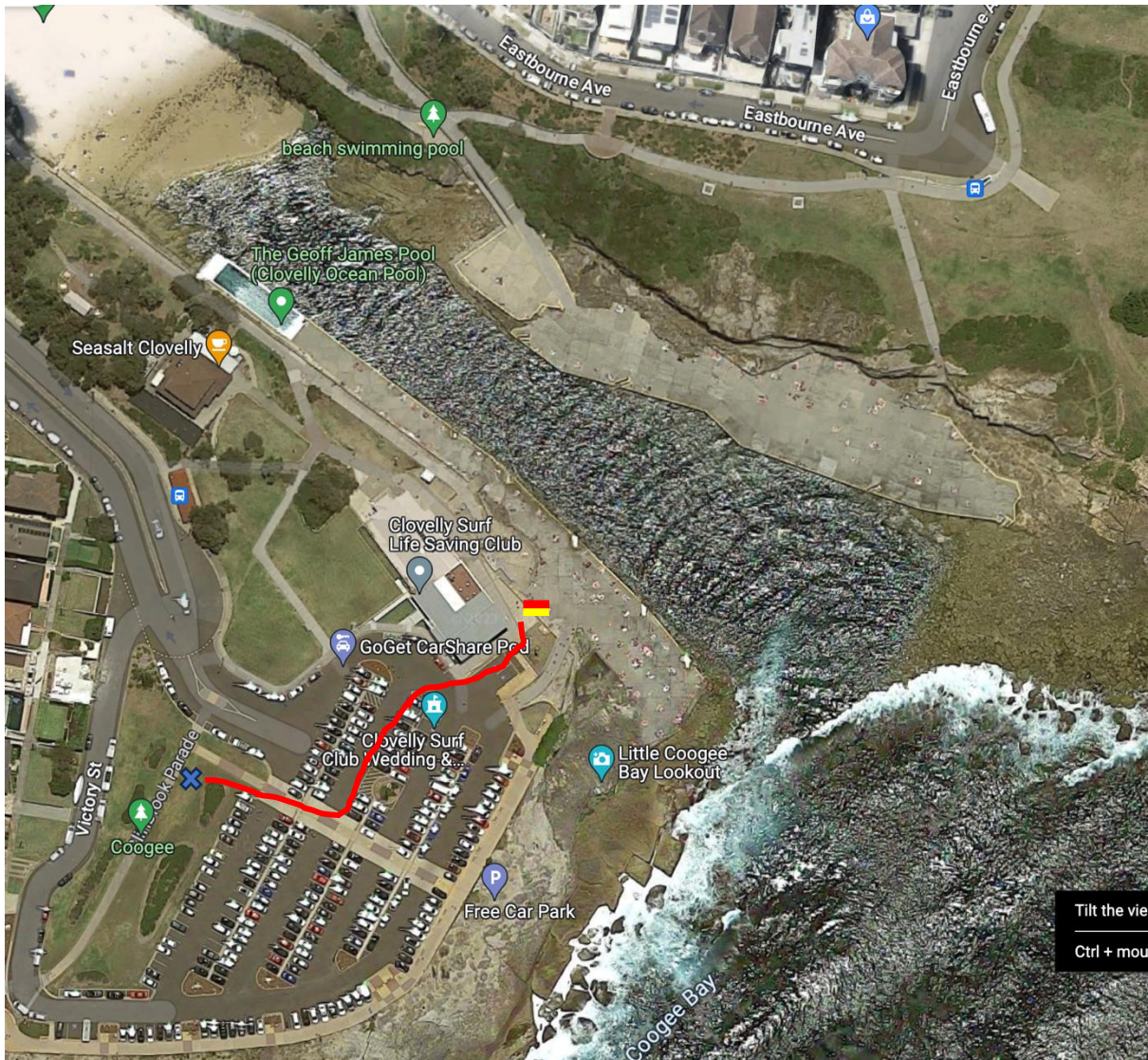
NPWS triggers for evacuations and assembly areas for visitors, cabin personnel and other community members.

NPWS Preparedness Procedures (fire danger):

- The Total Fire Ban (TOBAN) status triggers the closure of tracks and trails, so that all visitors, contractors, and non-fire trained staff are out of enclosed bushland and near safe open refuge area.
- Only the fire danger index (FDI) rating of *catastrophic* triggers the closure of visitor precincts, otherwise they may remain open for visitors as refuge areas.
- During large fire operations, or a fire threat to visitor areas, the park may be closed and evacuation / stay procedures implemented

In the event of an emergency situation the means of communication are radio through SurfCom, mobile phone and satellite phone.

EMERGENCY RALLY POINT



Emergency rally point, Cliffbrook Parade (park area).

HELICOPTER LANDING ZONE

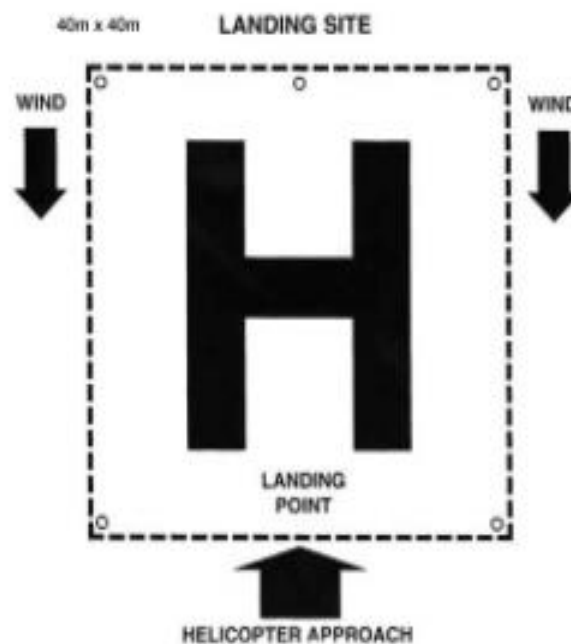
During major incidents, rescue helicopters may be required to land on the beach or near the beach to assist treating the patient and possibly transporting the patient to hospital. Ultimately, the decision of where to land is made by the pilot of the aircraft based on weather conditions, the nature of the incident and surrounding hazards. Patrol Captains can prepare and suggest a landing zone using local knowledge prior to a helicopter arriving.

Things to consider when establishing a helicopter landing zone:

- 40m x 40m area (minimum)
- Flat and cleared of hazards (loose objects, power lines, trees etc)
- Helicopter will approach the landing zone against the wind
- At night the landing zone should be expanded

Helicopter Landing Zone procedure:

- Nominate a suitable lifesaver as 'landing zone controller' and provide a radio
- 'Landing zone controller' briefs lifesavers on pre-landing and post-landing procedures
- Landing zone cleared of hazards, vehicles and people
- Landing zone established and marked with cones
- Establish contact with helicopter on Channel 1 prior to landing and confirm suitability of the landing zone
- Helicopter lands, lifesavers ensure perimeter is maintained until helicopter departs
- Do not approach the helicopter and await instructions from the helicopter crew (only approach the helicopter from the front once given all clear).



STANDARD OPERATING PROCEDURES

For detailed information on Lifesaving procedures and policies, refer to the Standard Operating Procedures on the SLSNSW website. <https://www.surflifesaving.com.au/resources/lifesaving-sops>